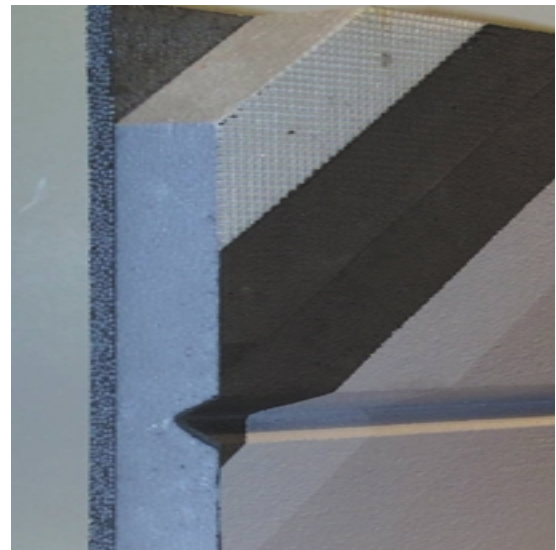


UNIFIX inc.

PERMABASE CEMENT BOARD

3/8" SHEATHING



UNIFIX INC. 
A SUBSIDIARY OF NATIONAL GYPSUM COMPANY

PERMABASE 3/8" SHEATHING

FEATURES

- Superior wind load and racking strength compared to reinforced gypsum
- Easy to cut and fasten
- Monolithic mass: cannot delaminate
- Best quality/price ratio
- Superior adherence to modified bitumen membrane used as air-vapor-water barrier
- Fire resistant, torch safe
- High density backer board, good support for masonry anchors
- Water resistant, not affected by rain

SPECIFICATIONS

Fasteners

Shall be UNIVIS from Unifix inc., self taping, wafer-head screw with the following minimal requirements:

- a- diameter of head: 10,1 mm (0,40")
- b- without ribs under head
- c "NOROCOD" chromate-based anti-corrosion treatment, with 3 mil thickness electro-plating
- d- Frequency: 20cm (8") C. to C.

Cement board

Shall be PermaBase 3/8" (9,5mm) from Unifix Inc. made of Portland cement, sand, and expanded polystyrene beads, with a fully embedded alkali resistant fiber mesh facing. The board shall have the following characteristic:

Physical test	Standard	Results (non-metric)	Results (metric)
Water absorption	ASTM C473	<10%	<10%
Compressive strength	ASTM C495	≥971 psi	≥6.7 MPa
Weight (3/8")	Property of material	2.13 lbs/sq.ft.	10.4 Kg/m ²
Thermal movement	Property of material	8.6 x10 ⁻⁶ in/F/ft	0.013 mm/C/m
Freeze/thaw resistance	ASTM C666	25 cycles	25 cycles
Bacteria resistance	ASTM G22	0 (no growth)	0 (no growth)
Fungus resistance	ASTM G21	0 (no growth)	0 (no growth)
Flame spread/Smoke developed	ASTM E84/UL 723	0	0
Permeance (perms) (board only)	ASTM-E-96-95	7.7 Perms	7.7 Perms

Property	ASTM Test Method	PermaBase 1/2"	PermaBase 3/8"	Durock 1/2"	Dens-glass Gold 1/2"
Water Absorption % by wt. 24 hrs.	C473	5	5	18	24
Flexural Strength (psi)	C947	1450	1,600	750	80
Nail Pull (wet)	D1037	125	78	125	36
Weight (lbs per sq.ft.)	C473	2,95	2,13	3	1,9
Freeze/Thaw Resistance cycle	C666	100	100	100	N/A
Flame Spread/Smoke developed	E-84	0/0	0/0	5/0	0/0
Wind Load PSF (studs 16" o.c.)	E-330	123	93	90	65
Racking Strength	ASTM E72	N/A	657	N/A	527
Bending Radius (ft.)	Property of material	5	4	8	N/A
Modified bitumen membrane adhesion	90° Peel Test	140N/5cm	140N/5cm	N/A	45N/5cm

Installation

Framing

Construction of walls with lightweight cement board cladding will be as indicated on the drawings and in accordance with the composition indicated in the list of walls. Framing studs shall be true and straight and must not deviate more than 3mm (1/8") in 2400 mm (8ft). Ensure that the total completed system deflection will not exceed L/360.

Cement board

Position boards perpendicularly to the studs, rough side exposed. Boards shall be tight and true with adjacent board, and no space shall show between them. Vertical joints shall be offset a minimum of 400mm (16") from those in adjacent panels. For more details contact 1-800-461-0955.

PermaBase® Brand is a trademark of National Gypsum Company.

2/2001